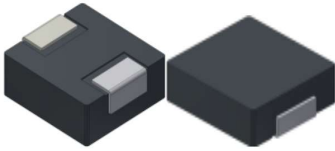


Molding Power Inductors -MTH Series

MTH Series



欣腾辉电子
XINTENGHUI ELECTRONICS

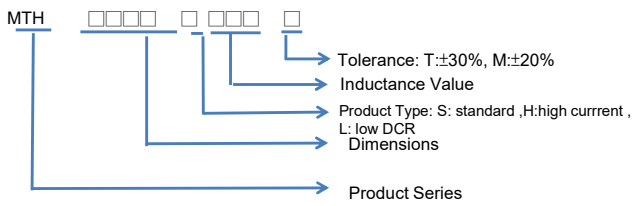
Description:

- RoHS, Halogen Free and REACH Compliance
- High current carrying capacity, Low core losses
- Powder iron core material
- Frequency range up to 5MHz.
- Magnetically shielded, low EMI

Applications:

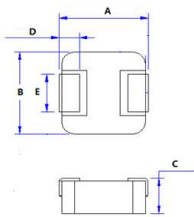
- Switches and servers
- SSD modules
- Notebook regulators
- Battery power systems
- DC/DC converters

Product Identification

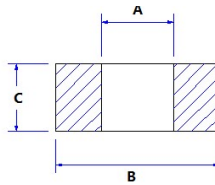


Dimensions-mm

Shape and Dimensions



Recommended Pad Layout



Dimensions-mm

TYPE	A	B	C	D	E
1360	13.45±0.35	12.6±0.3	5.8±0.2	2.0±0.5	5.0±0.5

Dimensions-mm

TYPE	A	B	C
1360	8.0	14.5	5.0

Molding Power Inductors -MTH Series

Electrical Characteristics

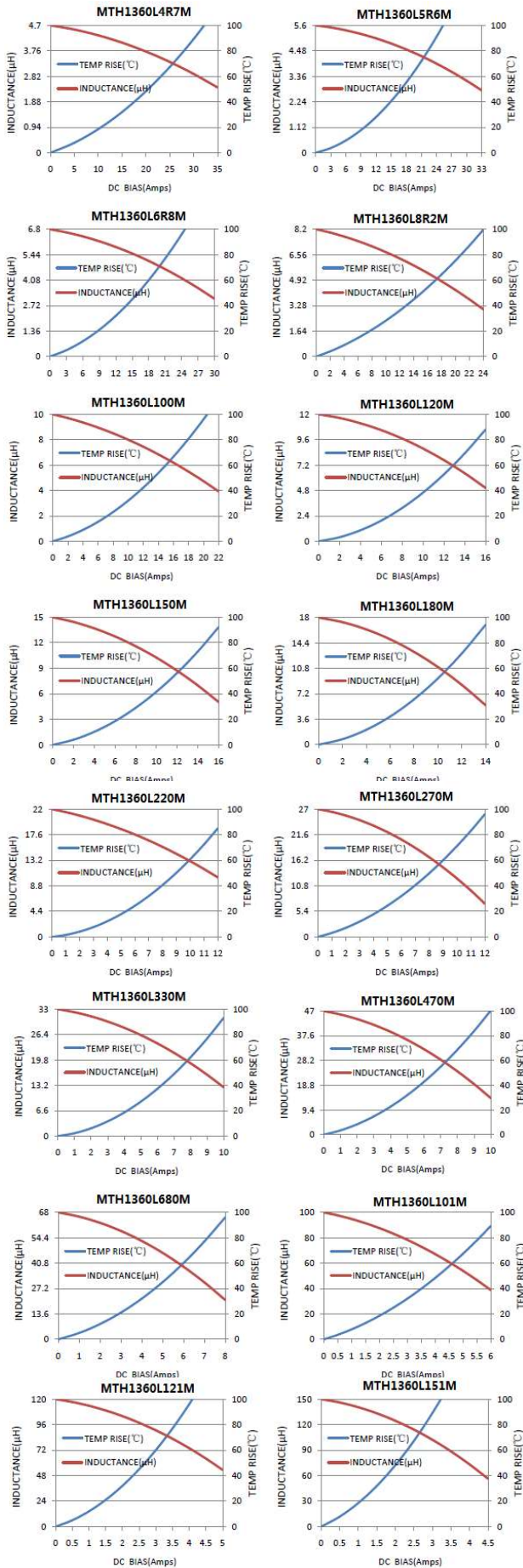
Part No.	Inductance (μ H)	Tolerance (\pm %)	Test Freq.	RDC(m Ω) Max.(Typ)	Irms(A) Typ.	Isat(A) Typ.
MTH1360L4R7M	4.70	20	100KHZ,1V	9.0(8.5)	15.0	24.0
MTH1360L5R6M	5.60	20	100KHZ,1V	11.0(9.5)	13.0	22.5
MTH1360L6R8M	6.80	20	100KHZ,1V	13.5(11.5)	12.0	19.0
MTH1360L8R2M	8.2	20	100KHZ,1V	16.0(13.6)	11.0	13.5
MTH1360L100M	10.0	20	100KHZ,1V	20.7(18.0)	10.0	12.5
MTH1360L120M	12.0	20	100KHZ,1V	23.0(20.0)	9.0	10.0
MTH1360L150M	15.0	20	100KHZ,1V	29.0(25.0)	8.5	9.0
MTH1360L180M	18.0	20	100KHZ,1V	35.0(30.0)	7.5	8.0
MTH1360L220M	22.0	20	100KHZ,1V	39.5(34.0)	7.0	7.5
MTH1360L270M	27.0	20	100KHZ,1V	56.0(49.0)	6.0	6.5
MTH1360L330M	33.0	20	100KHZ,1V	75.0(65.0)	5.5	6.0
MTH1360L470M	47.0	20	100KHZ,1V	90.0(80.0)	5.0	5.5
MTH1360L680M	68.0	20	100KHZ,1V	140.0(120.0)	4.0	4.5
MTH1360L101M	100.0	20	100KHZ,1V	200.0(180.0)	3.0	3.5
MTH1360L121M	120.0	20	100KHZ,1V	235.0(210.0)	2.0	3.2
MTH1360L151M	150.0	20	100KHZ,1V	350.0(300.0)	1.5	2.7

Notes:

- All test data is referenced to 25 $^{\circ}$ C ambient.
- Operating temperature range -55 $^{\circ}$ C to +125 $^{\circ}$ C (Including self - temperature rise)
- Irms(A):DC current(A) that will cause an approximate Δ T of 40 $^{\circ}$ C (reference ambient temperature is 25 $^{\circ}$ C)
- Isat(A):DC current(A) that will cause L0 to drop approximately 30%.
- Measure Equipment :
L : Wayne kerr 3260B/G LCR Meter (or equivalent), 100KHz 1.0V
RDC : CHEN HWA502BC/HP4338B (or equivalent)
Isat : Wayne kerr 3265B Bias Current Source (or equivalent)
Irms : Wayne kerr 3265B Bias Current Source (or equivalent)
- Test Condition:
Temperature:26 \pm 3 $^{\circ}$ C
Humidity:<70% RH
Frequency:100KHz 1.0V
- Absolute maximum voltage 80VDC

Molding Power Inductors -MTH Series

Curve:



Molding Power Inductors -MTH Series

Packaging:

Packaging -Cover Tape

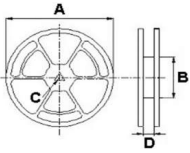
The force for tearing off cover tape is 10 to 130 grams in the arrow direction.



Packaging Quantity

TYPE	PCS/REEL
MTH1360	500

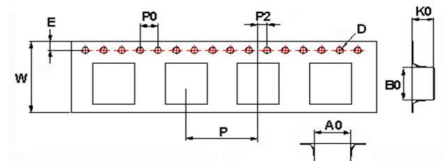
Reel Dimensions



Reel Dimensions:mm

TYPE	A	B	C	D
MTH1360	330	100	13	24.4

Tape Dimensions in mm



TYPE	A0	B0	K0	D	E	W	P	P0	P2
MTH1360	13	14	6.25	1.55	1.75	24	16	4	2